

F1 Dosing Pump

Quick Start Guide

A0 2022/09/22



Kamoer Fluid Tech (Shanghai) Co., Ltd.

www.kamoer.com

Warranty service

1. Warranty Conditions

The warranty service is only valid for users who have correctly installed, used and maintained in accordance with the manual, and all man-made faults or damages are not covered by the warranty. Please keep the proof of purchase in a safe place so that you can obtain satisfactory after-sales service in a timely manner.

2. Warranty coverage

Within one year from the date of purchase, if there is any damage caused by the manufacturing process or components, the company will provide free warranty service. The free maintenance service provided during the warranty period includes free repair, free replacement of faulty spare parts, and replacement of products that cannot be repaired with products of the same model. Free service does not include shipping costs incurred for product repairs.

3. Non-warranty coverage

The following factors are not covered by the free warranty, and customer repairs are subject to fees.

- 1) Product appearance (please confirm when purchasing);
- 2) Improper use, maintenance, or storage (please use, maintain and store correctly according to the user manual);
- 3) Access to inappropriate power supply;
- 4) Damage to the components caused by the short circuit of the circuit board caused by the entry of various insects into the machine;
- 5) Losses caused by accidents;
- 6) Use inappropriate spare parts (non-company spare parts are not applicable);
- 7) Persons not authorized by the company negligently handle, modify or repair (please do not dismantle or repair without authorization);
- 8) Failure or damage caused by use outside the applicable occasion;
- 9) Damage caused by force majeure, etc.;
- 10) Consumable and wearing parts (pump tube, connector, connecting tube, etc.);
- 11) The warranty period has expired.

Know F1 Dosing Pump

The F1 is a single-channel intelligent dosing pump with WiFi & Bluetooth control function, mainly used to add the various elements needed for marine life growth, such as calcium, magnesium, KH booster, trace elements, etc. to marine life cylinder timing, quantitative and accurate. The automation of F1 dosing pump can greatly reduce the amount of manual added work, but also avoid manual addition caused by leakage, adding excessive or insufficient errors.



- | | | |
|--------------------|-----------------------|-----------------------|
| 1. Liquid inlet | 2. Liquid outlet | 3. KXF pump head |
| 4. indicator light | 5. DC 12V power input | 6. DC12V power output |

Unpacking

- Before opening the box, check whether the outer packaging is damaged during transportation.
- After opening the packing box, refer to the packing list in the appendix of this guide to confirm that all parts are missing, and check for visible damage.
- If you find any defects during unpacking, please contact the manufacturer immediately.

Download app

1. Scan the QR code on packing box or below, download the app of the icon below.



iOS



Android

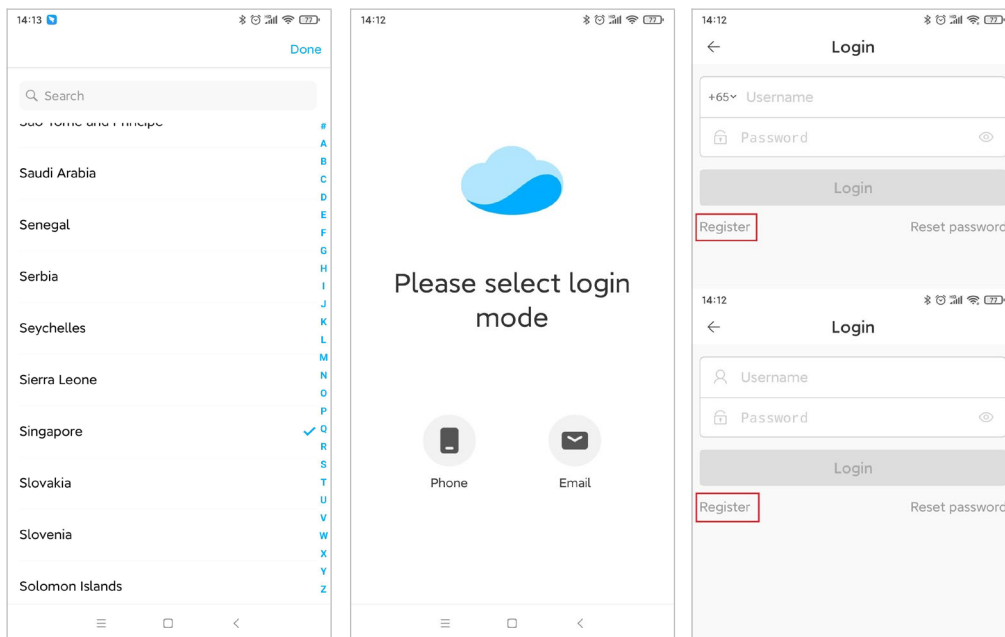
2. Apple users enter the App Store, Android users enter the Google Play, search for "Kamoer Remote" and find the corresponding icon app download.

Note: This app supports iOS 9.1 and above versions of Apple devices, Android 4.4 and above versions of Android devices.

Register account

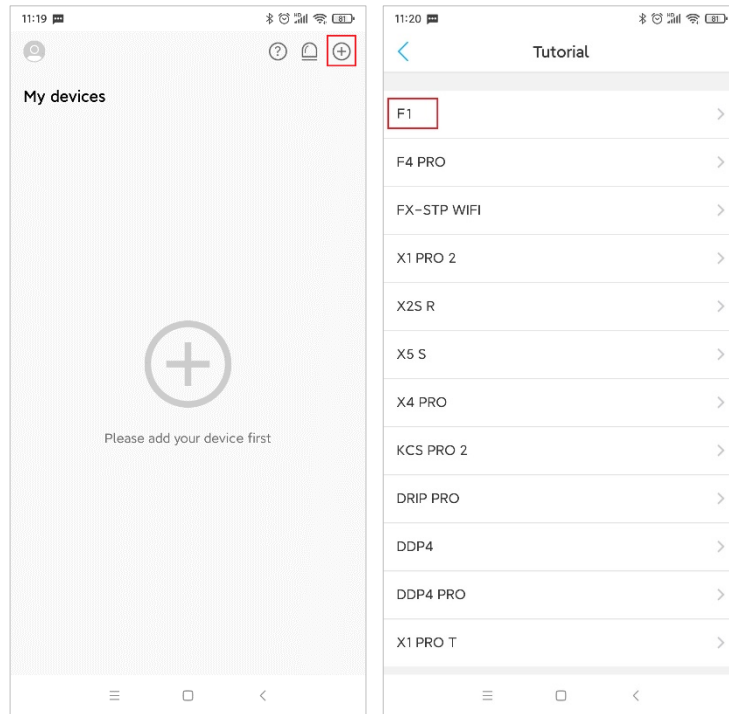
Open the App, scan the QR code of the device or manually select the region where the device is located, register via mobile phone or email, and follow the App prompts to complete the account registration.

Note: Region selection is very important. Wrong region selection will result in failure to configure the network. It is recommended to scan the QR code of the device to select the region.



View Tutorial

On the device list page, click the "?" icon in the upper right corner to enter the "Tutorial" page, and select "F1" to view the tutorial. The tutorial includes the user manual and frequently asked questions.



Indicator light

Status	Description
On	Connected to the cloud
Flashing red	In network configuration
Flashing blue	Disconnected from the cloud
Off	No power supply or power failure

Connect F1 to the cloud

The dosing pump is powered on for the first time after unpacking, and You then need to use the App to connect the micropump to the cloud through a wireless router. The steps are as follows:

1. Ensure that the wireless router has connected to the Internet. Connect your phone to the wireless router's 2.4 G WiFi hotspot (The device does not support 5G WiFi). Turn on your phone's Bluetooth permission.
2. Open the Kamoer Remote App, log in with the registered account, click the "+" icon in the

upper right corner, select "**Add Device**", select "**F1 Dosing Pump**" in the list of supported devices to add.

3. The app will automatically search for nearby F1 dosing pumps via Bluetooth. After the device is searched, click the device icon to add, the app will enter the WiFi selection page.
4. Select WiFi in the WiFi list, click to enter the WiFi setting page.
5. Enter the password and click "Next" to enter the connection interface, at this time the indicator light flashes red.
6. If the connection is successful, the App will prompt that the connection is successful, and the indicator light will turn blue at this time. If the connection fails, please check the reason as prompted by the App.

Binding F1

There are two ways for user to bind the F1.

Method 1: Bind the dosing pump through the network configuration described above.

Method 2: If the dosing pump is connected to the cloud through the router, the mobile phone can be connected to the wireless router, and the App will scan and display the locally available dosing pump. The user directly clicks the "**Bind**" button on the right side of the dosing pump to complete the binding.

Unbind

On the device list page, press and hold the corresponding dosing pump icon, the "**Remove**" icon pops up at the bottom, and clicks the Remove icon to unbind.

Notes

- Please use the product's own power adapter and work in the specified working environment.
- This product only supports 2.4G WIFI and does not support 5G WIFI.
- The dosing pump should be placed in a reasonable position to ensure that the height difference between the inlet and the outlet is within 0.5 m.
- The connection pipe for liquid inlet should be as short as possible, and the outlet connection pipe should be suspended above the container.
- Please check carefully that the inlet and outlet connections are in the correct direction.

Technical parameter

Dimensions (length * width * height)	100*90*63 mm (including pump head)
Weight	205g (power adapter not included)
Power Adapter	Input: 100VAC -240VAC Output: DC12V 1A
Dosing parameters	Dosing channel: 1 KXF-B06 pump head Flow: >33ml/min Number of dosing: 24 times/day - 1 time/99 days Dosing accuracy: $\leq \pm 2\%$ Volume range: 0.1ml-9999ml
Interface	WiFi & Bluetooth
Working environment	Temperatures: 0 - 70°C Humidity: 10% - 90% (non-condensation)
Storage environment	Temperature: -20C - 85°C Humidity: 10% - 90% (non-condensation)

Packing list

No	Name	Model	Unit	Qty
1	Dosing pump	F1	pcs	1
2	Power adapter body	DC12V 1A	pcs	1
3	Plastic cylinder	10ml	pcs	1
4	PVC connection tube	3*5 mm; Transparent	meter	2
5	Power extension cable	L-type;75mm	pcs	1
6	Quick start guide	English	pcs	1



Kamoer Fluid Tech (Shanghai) Co., Ltd.

Addr: Building 4, No.79 Xiangjing Road, Songjiang District, Shanghai

Website: www.kamoer.com

Kamoer is registered trademark of Kamoer Fluid Tech (Shanghai) Co., Ltd. We reserve the right to improve or alter appearance and technical specifications without notice.