

X1 PRO T

Micropump

Quick Start Guide

A0 2021-03-16



Kamoer Fluid Tech (Shanghai) Co., Ltd.

www.kamoer.net

Know X1 PRO T

X1 PRO T is a single channel stepping micropump, which is remotely controlled by mobile App. It adopts a long-life stepping motor and meets the requirements of precise addition and long-time use. It can be used as both titration pump and calcium reverse pump. As a titration pump, it can flexibly and accurately add various elements needed by marine organisms to the marine biological tank, such as calcium, magnesium, KH lifting agent, trace elements, etc. through automatic addition, the workload of manual addition is greatly reduced, and the mistakes caused by manual addition such as omission, excessive or insufficient addition are avoided. As a calcium reverse pump, it can provide stable flow for the calcium reactor.

X1 PRO T uses a high-quality plastic non corrosive geared pump, which will not slip or rust. This is extremely reliable and includes threaded connectors to ensure that there will be no leakage when joined to dose lines. The X1 Pro T uses high grade European internal tube line.



- | | | |
|--------------------|-----------------|--|
| 1. Liquid outlet | 2. Liquid inlet | 3. KFS pump head |
| 4. Indicator light | 5. Reset button | 6. DC 12V power 7. Screw fixing holes |

Download the app

1. Scan the box or the QR code below to find the application download with the following icon.



iOS



Android

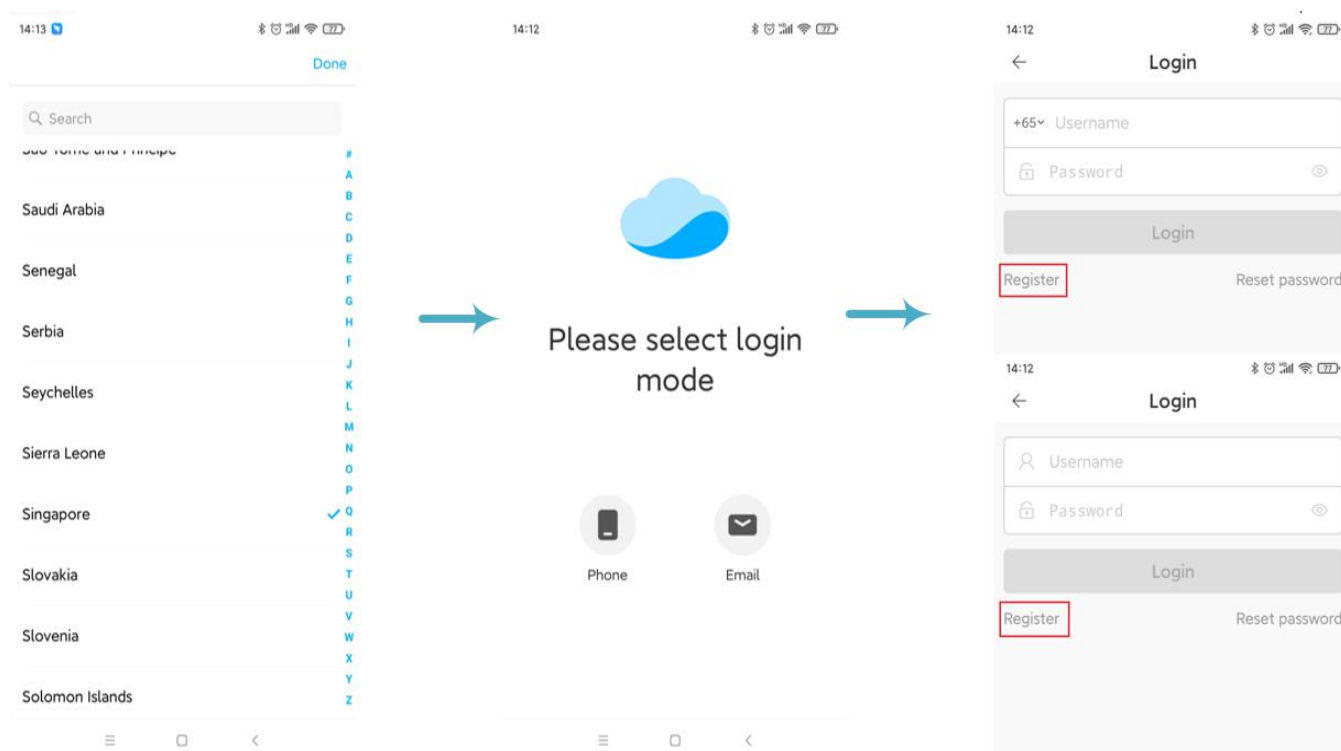
2. Apple users enter the App Store application store, Android users enter the Google Play application store, search for "Kamoer remote", find the application download corresponding to the icon.

Note: This App supports Apple devices with iOS 9.1 and above, and Android devices with Android 4.4 and above.

Register account

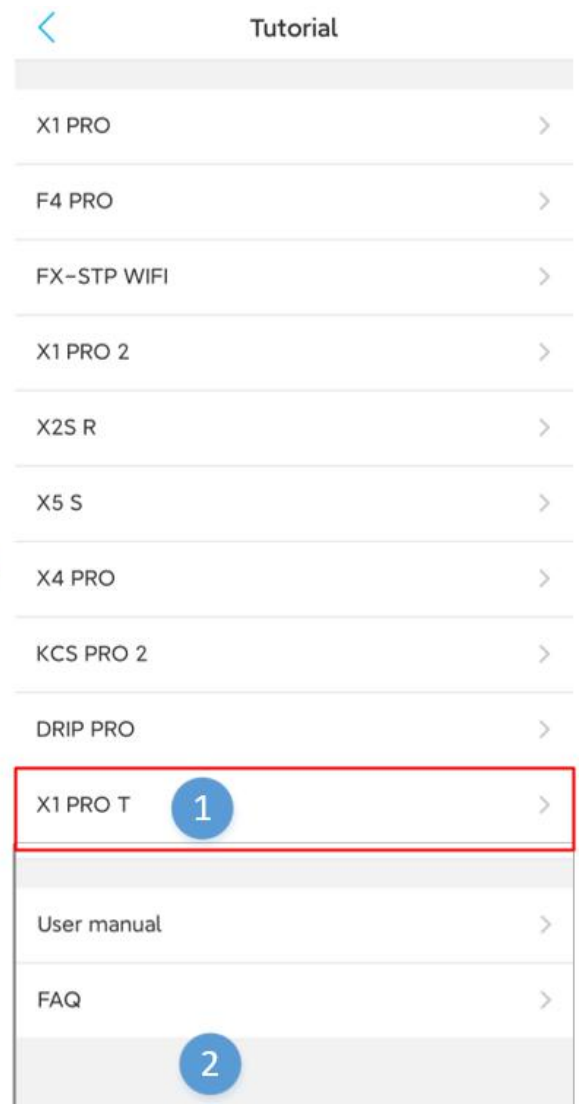
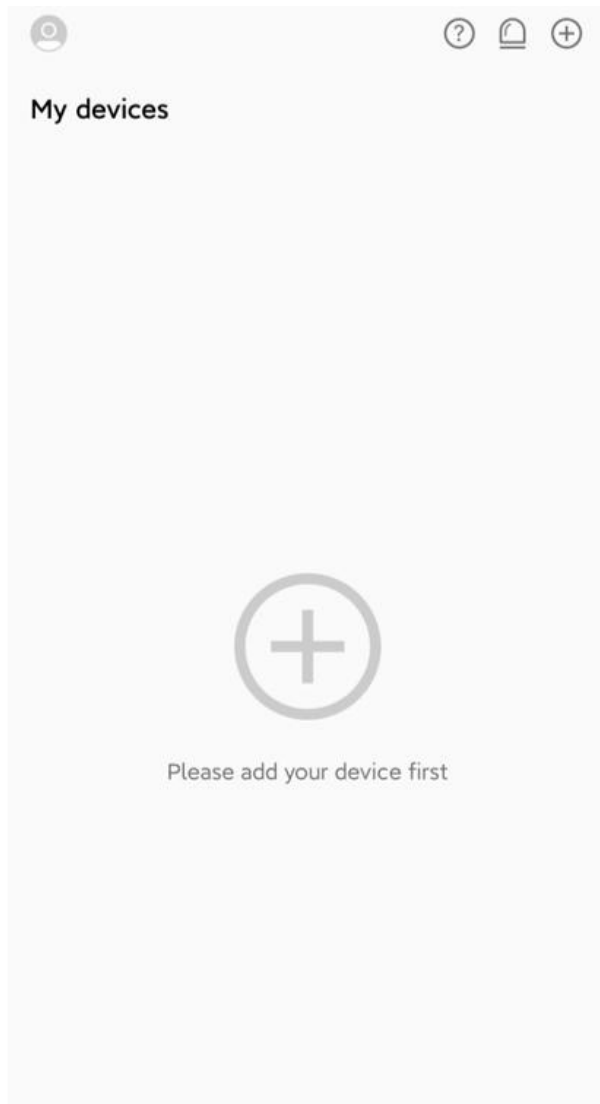
Open the App, scan the QR code of the device or manually select the region where the device is located, register via mobile phone or email, and follow the App prompts to complete the account registration.

Note: Region selection is very important. Wrong region selection will result in failure to configure the network. It is recommended to scan the QR code of the device to select the region.



View tutorial

On the device list page, click the "?" icon in the upper right corner to enter the "Tutorial" page, and select "X1 PRO T" to view the tutorial. The tutorial includes the user manual and frequently asked questions.



Indicator light description

Indicator	Status	Description
Status Indicator (blue)	On	Connected to the cloud
	Off	Disconnected from router
	Flashes quickly	Configure network by router. When the router turns on AP isolation, this mode cannot be used, and you need to switch to AP network configuration mode
	Show flashing (on for 0.2 seconds, off for 2 seconds)	Configure network by AP
	Slow flashing (on for 2 seconds and off for 2 seconds)	Disconnected from the cloud
Power Indicator (red)	On	Powered on
	Off	No power supply or power failure

Note: X1 PRO T uses red and blue two-color indicator lights. When the blue light is on or flashing, the red light is off.

Connect X1 PRO T to the cloud

The dosing pump is powered on for the first time after unpacking, and the status indicator light (blue) flashes slowly. You then need to use the App to connect the micropump to the cloud through a wireless router. The steps are as follows:

1. Ensure that the wireless router has connected to the Internet. The mobile phone is connected to the 2.4G Wi-Fi hotspot of the wireless router (the device does not support 5G Wi-Fi, and 5G Wi-Fi hotspots cannot be used)
2. Open the Kamoer Remote App, log in with the registered account, click the "+" icon in the upper right corner, select **"Add Device"**, select **"X1 PRO T"** in the list of supported devices to add.
3. After entering the router Wi-Fi password, click the **"Next"** button, press and hold the Reset button on the front panel for more than 6 seconds, then release it, click the **"Next"** button, and wait for the blue status indicator to flash;
4. About 3 seconds later, the blue light will flash intermittently every 2 seconds, indicating that the device is in the network. click the **"The blue light is flashing slowly and intermittently"** icon on the App interface, and complete the network configuration according to the interface prompts.
5. After the connection is successful, the App will prompt that the connection is successful. At this time, the status indicator (blue light) is on, indicating that micropump has been connected to the cloud, and the user has also completed the binding with X1 PRO T.

Binding X1 PRO T

There are two ways for user to bind the X1 PRO 2.

Method 1: Bind the dosing pump through the network configuration described above.

Method 2: If the dosing pump is connected to the cloud through the router, the mobile phone can be connected to the wireless router, and the App will scan and display the locally available dosing pump. The user directly clicks the "**Bind**" button on the right side of the dosing pump to complete the binding.

Unbind X1 PRO T

A long press with the corresponding device icon on the device list page, the "Delete" icon will pop up at the bottom, click the "Delete" icon to unbind.

Notes

1. Please use the power adapter provided by the product and work under the specified working environment
2. This product only supports 2.4G Wi-Fi, not 5G Wi-Fi.
3. Micropump should be placed in a close position to ensure that the height difference between the liquid inlet and the liquid outlet is within 0.5 meters.
4. The connecting pipe for the liquid inlet should be as short as possible, the connecting pipe for the liquid outlet should be suspended above the liquid being dosed.
5. Check dose lines are in the right direction on pump inlet outlet before using dose unit.

Technical Parameters

Dimensions (length*width*height)	100 x 92 x 63 mm (with pump head)
Weight	316 grams (not including power adapter)
Power Adapter	Input: 100-240VAC Output: DC12V 2A
Dosing parameters	Dosing channel: 1 KFS pump head Flow rate: >70ml/min Dosing times: 24 times/day-1 time/99 days Dosing accuracy:<±2% Volume range: 0.1ml-9999ml
Interface	WIFI communication interface
working environment	Temperature 0-70°C, humidity 10%-90% (non-condensing)
Storage environment	Temperature -20 °C -85 °C , humidity 10%-90% (non-condensing)

Packing List

No.	Name	Specification	Unit	Qty
01	Host	X1 PRO T	pcs	1
02	Power adapter	DC12V 2A	set	1
03	Plastic measuring cylinder	10mL	set	1
04	PVC connecting pipe	3*5mm	meter	2
05	Quick Start Guide	English	pcs	1
06	Product certification		pcs	1

Warranty service

Warranty service is only valid when product is used in accordance with the instruction manual. Any misuse or damage by consumer is not covered by the warranty. Please keep your purchase receipt for after-sales service.

The Kamoer will provide free warranty service of the product only for any damage caused by manufacturing processes or components within One year from the date of purchase. The free repair service provided during the warranty period includes free repair, free replacement and replacement of faulty spare parts, and products that cannot be repaired are replaced by the same model. The free service does not include shipping costs for the product due to repairs.



Kamoer Fluid Tech (Shanghai) Co., Ltd.

Add: Building 4, No. 79, Xiangjing Road, Songjiang District,

Shanghai Website: www.kamoer.net

Kamoer is registered trademark of Kamoer Fluid Tech (Shanghai) Co., Ltd. We reserve the right to improve or alter appearance and technical specifications without notice.